



Enterprising SELF

**INTERNATIONAL PROJECT FOR ENTREPRENEURSHIP IN
SCHOOLS 2009-2011**

SURVEY RESULTS



EUROPEAN UNION
EUROPEAN REGIONAL DEVELOPMENT FUND
INVESTING IN YOUR FUTURE



CENTRAL BALTIC
INTERREG IV A
PROGRAMME
2007-2013



The Enterprising SELF project has been running in Sweden, Estonia, Latvia and Finland since January 2009, and is scheduled to terminate in December 2011. The objective of the Enterprising SELF project is to change the attitudes in society towards more enterprising and therefore improve regional competitiveness.

Enterprising Education in **S**weden, **E**stonia, **L**atvia and **F**inland (**Enterprising SELF**) has been a three year project financed by Central Baltic INTERREG IVA Programme. In this project there four countries are represented, one region in each country. A low level of entrepreneurship characterizes the partner regions. General change in the attitude towards the entrepreneurship and entrepreneurs is needed.

The main target groups of the project were teachers, nurses, headmasters and student counsellors. Other target groups were students, municipality leaders, politicians, parents and companies.

In order to measure the effects of the project, we conducted surveys at the beginning and end of the project period. Pupils in the 12–19 age group and staff from the countries that participated in the project have answered questions about entrepreneurship in schools.

In this document you find the whole survey with data from both 2009 and 2011 in order to make a comparison and see differences. The survey shows that both teachers and pupils have improved their knowledge of entrepreneurship!

Ingela Ernestam

Project Manager
Enterprising SELF, Sweden

Result SELF-survey, School staff 2009 and 2011

1. Country

Country	2009	2011
Sweden	73	63
Estonia	105	88
Latvia	411	135
Finland	17	24
Total	606	310

2. Gender

Gender	2009	2011
Man	60	36
Woman	546	274

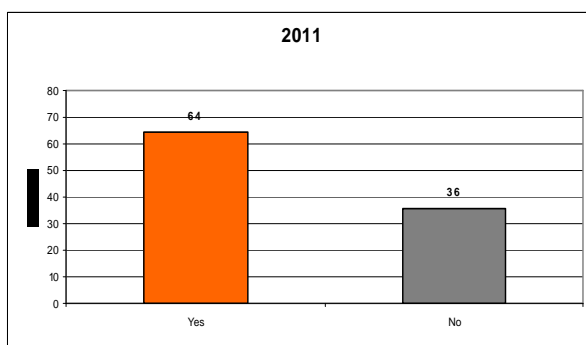
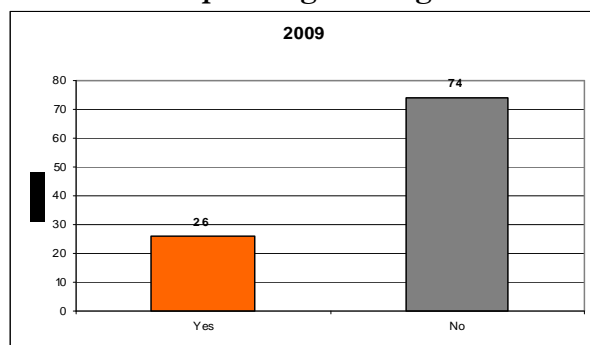
3. Age

Age	2009	2011
-30 years	101	57
31-50 years	328	176
51- years	177	76

4. Profession

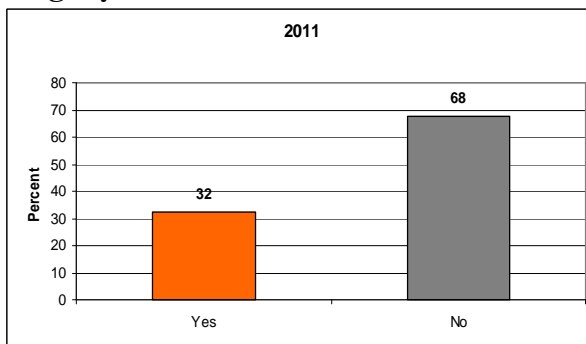
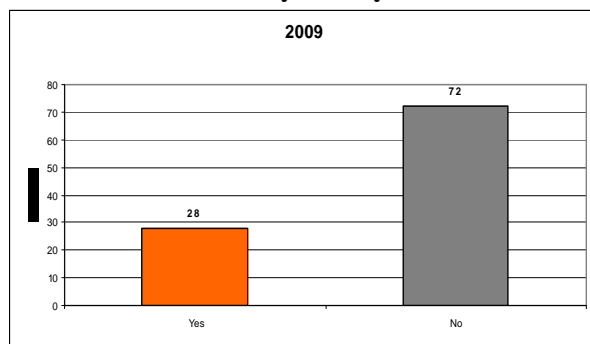
Profession	2009	2011
Headmaster	32	21
Counsellor	7	6
Teacher	487	209
Nurse	54	44
Other	13	10

6. I have experience from enterprising training, for example courses on enterprising in studies or on up-dating training.



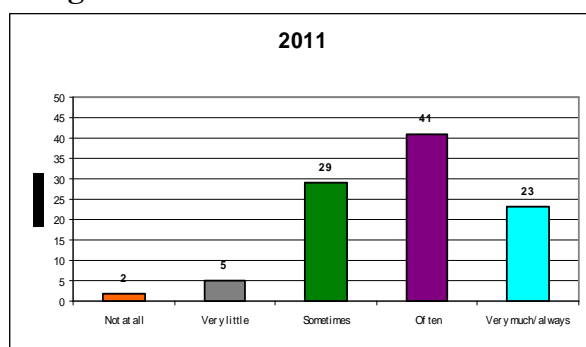
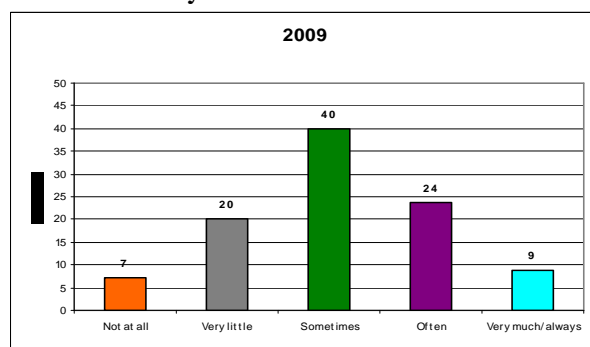
The result shows that many more of the school staff have experience from enterprising training.

7. I or someone in my family is/has been running my own firm/business.



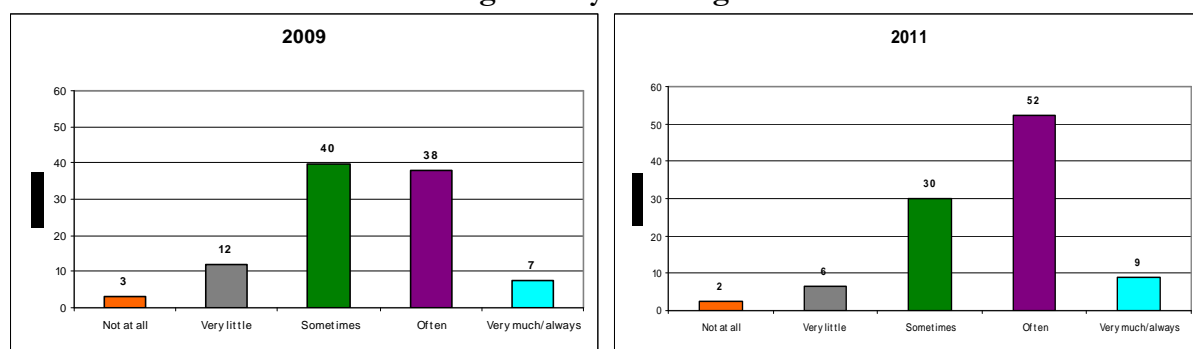
The percent of those who has their own business is almost the same between 2009 and 2011.

8. I can tell my students what the term enterprising means.



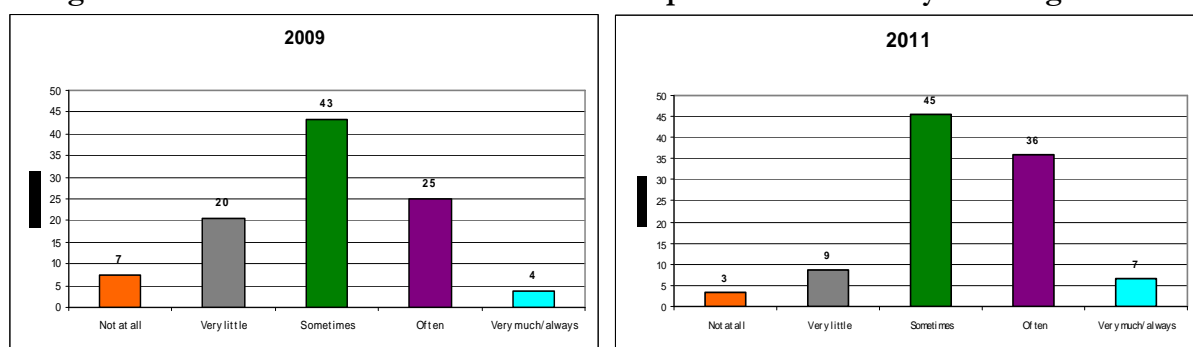
Many more of the school staff can tell their students what the term enterprising means.

9. I use the "Problem based learning" in my teaching.



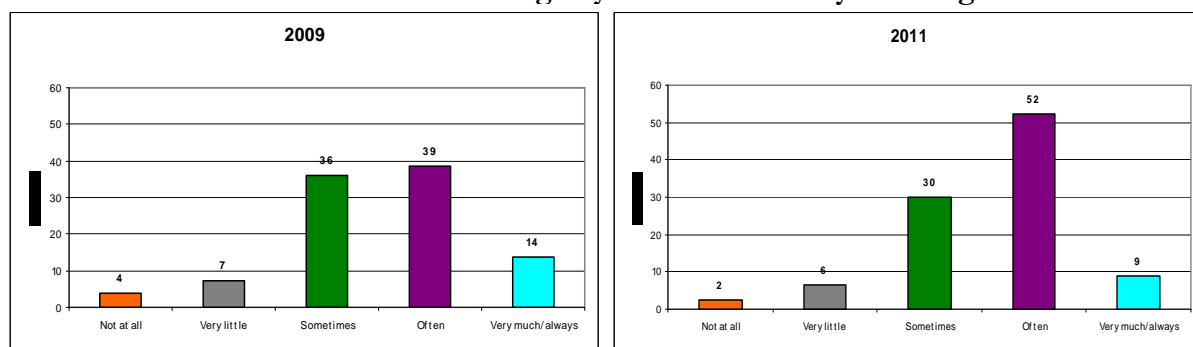
The school staff use "Problem based learning" more often in 2011 than in 2009. The result is very positive.

10. I give the students the freedom to decide and plan the tasks in my teaching.



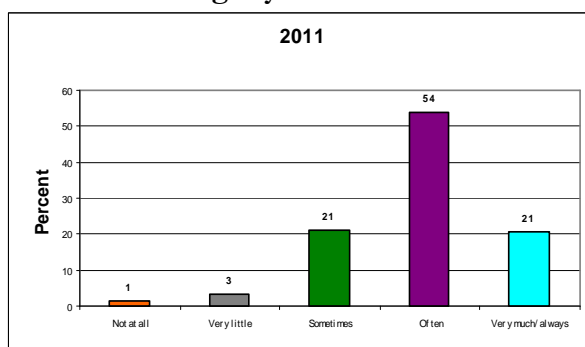
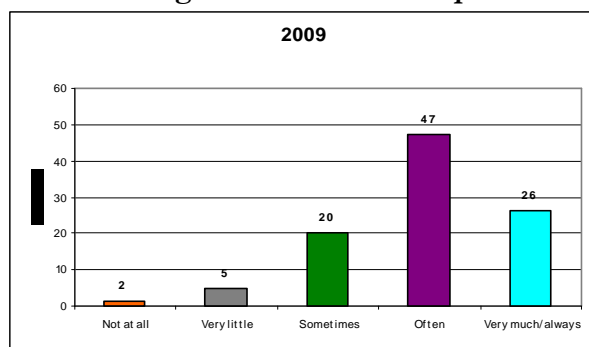
The result shows that the school staff give the students much more freedom to decide and plan their tasks.

11. I let the students search for knowledge by themselves in my teaching.



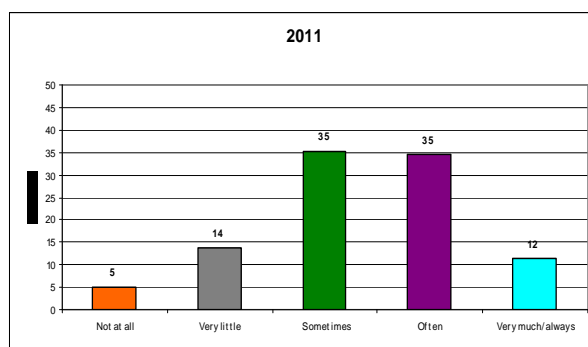
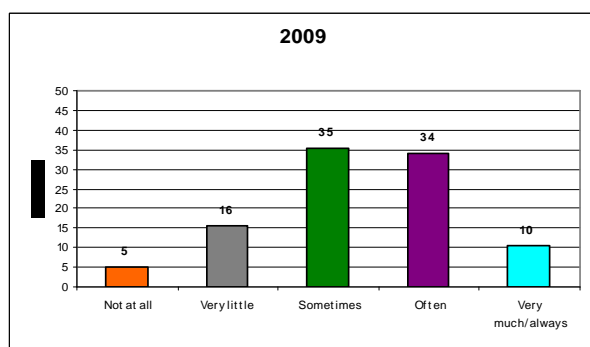
The result shows that the school staff tend to more often let students search for knowledge by themselves.

12. I encourage the students to explore their own ideas during my lessons.



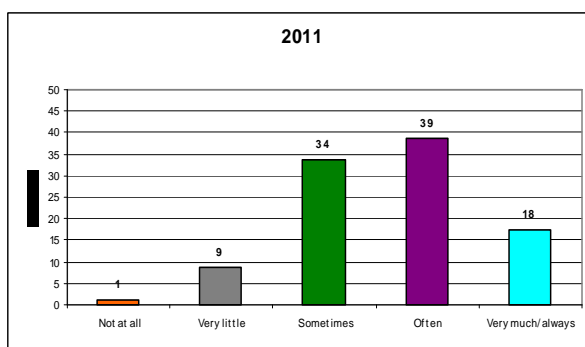
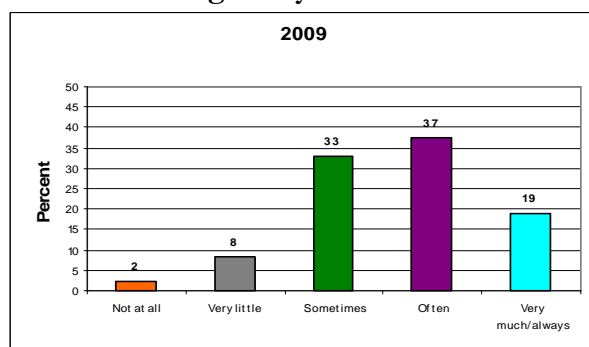
The result shows that the school staff are very eager to encourage the students ideas.

13. My timetable is designed for giving the student the possibility to influence for example on working methods, contents of the lesson.



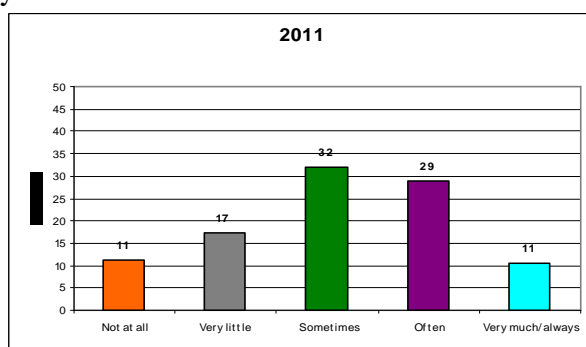
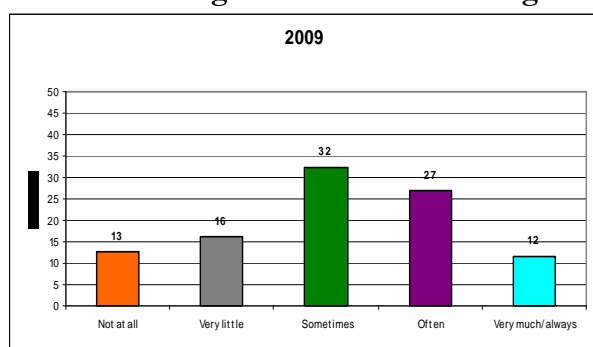
The result shows that the schoolstaffs timetable is designed so the students can influence for example on the contents of the lessons. There is no big change from 2009 to 2011.

14. The teaching in my school includes cross curricular activities.



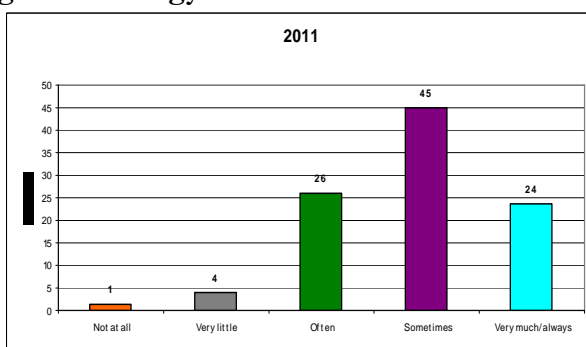
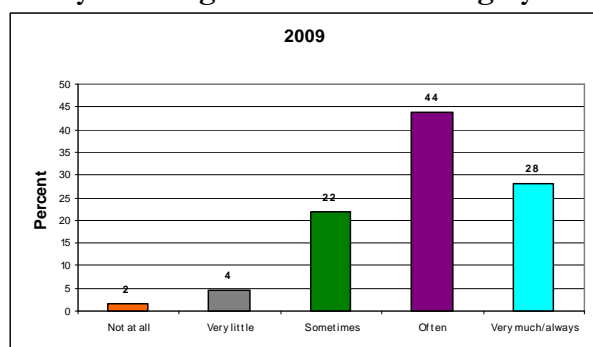
The result shows that the teaching including cross curricular activities are pretty much the same from 2009 and 2011.

15. We offer longer sessions for learning at my school.



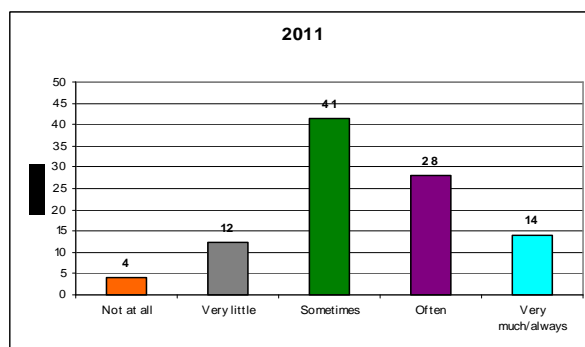
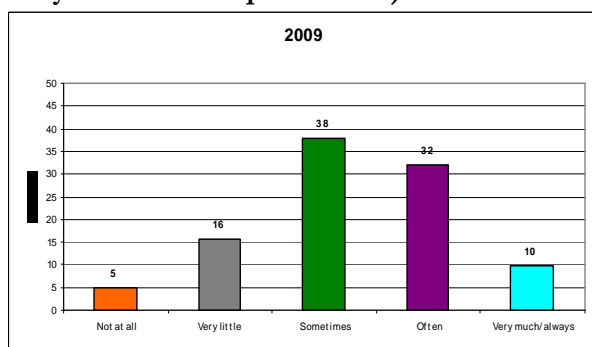
The result shows that the percent between 2009 and 2011 is relatively unaltered when it comes to having longer sessions for learning.

16. My teaching is based on learning by doing methodology.



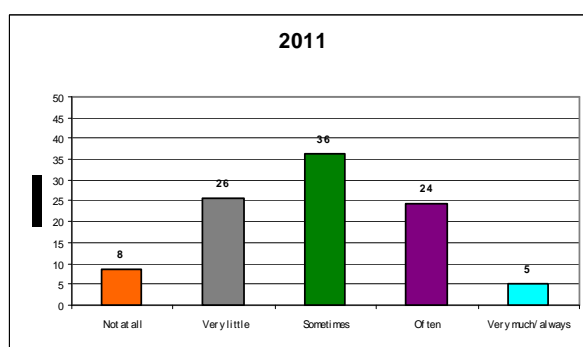
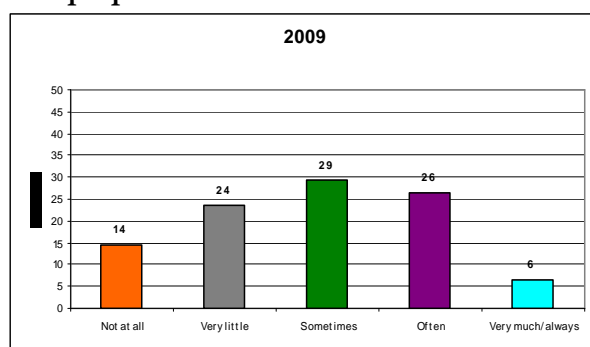
A lot of the teaching is based on the learning by doing methodology. The result is unaltered from 2009 to 2011.

17. I carry out some of the teaching outside the classroom and the school (for example study visits to companies etc.).



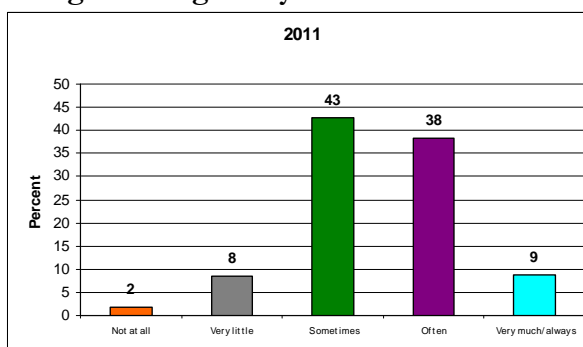
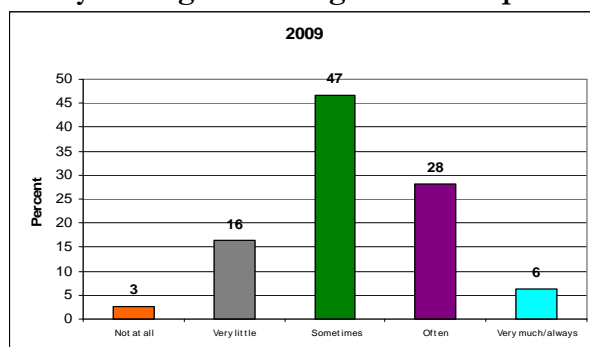
More of the schoolstaff tend to carry out some of the teaching outside.

18. I prepare the students to have their own business in the future.



There has been a decrease among the schoolstaff when it comes to not preparing the students to have their own business in the future.

19. My colleagues are eager to develop enterprising teaching in my school.



The schoolstaff definitely have more colleagues who are eager to develop enterprising at the schools.

Result SELF-survey, Students 2009 and 2011

1. Country

Country	2009	2011
Sweden	341	145
Estonia	220	153
Latvia	1588	486
Finland	82	55
Total	2231	839

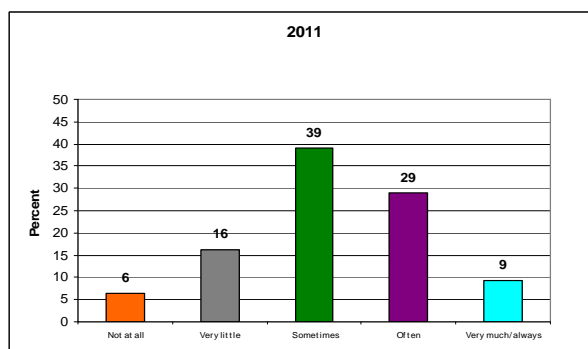
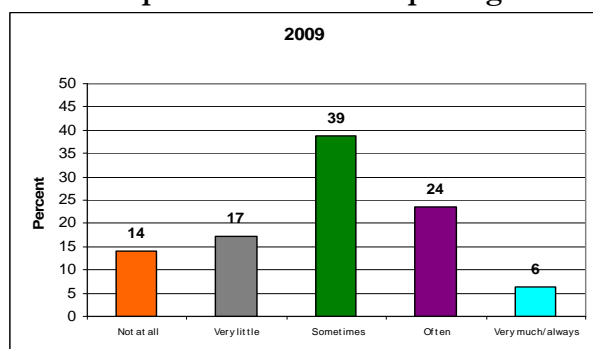
2. Gender

Gender	2009	2011
Boy	1060	386
Girl	1171	453

3. Age

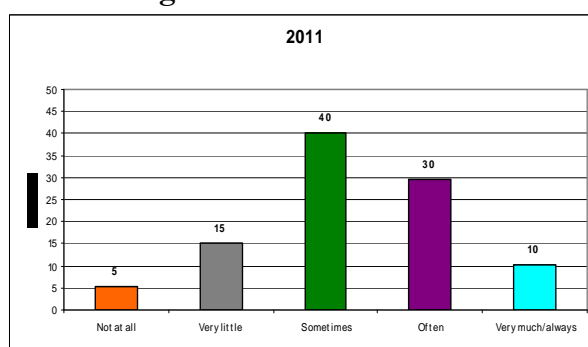
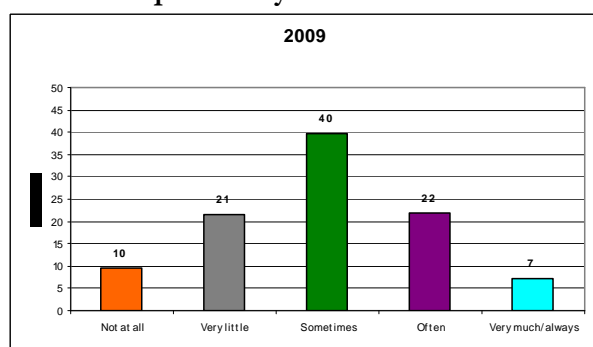
Age	2009	2011
12	285	95
13	324	121
14	364	140
15	309	115
16	443	110
17	282	106
18	165	102
19	20	41
20	39	9

4. I can explain the term enterprising for someone who doesn't know what it is.



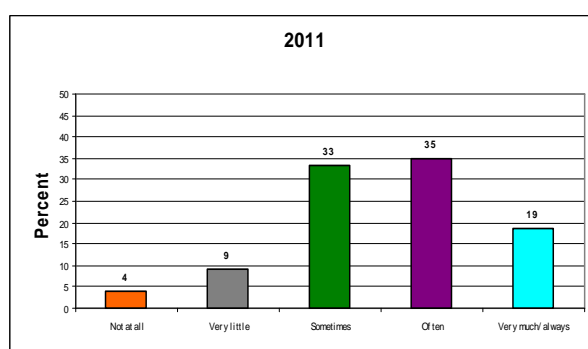
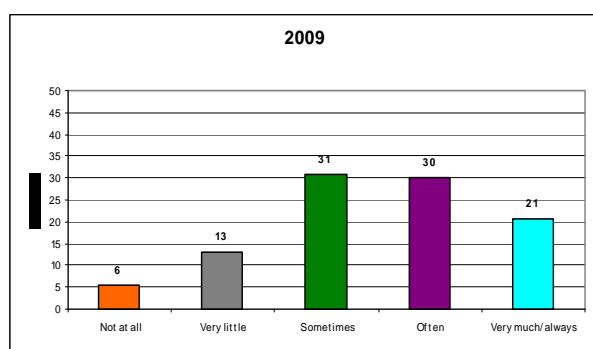
The result shows that more students can explain the term enterprising after the SELF-project.

5. I come up with my own ideas on the tasks that are assigned at school.



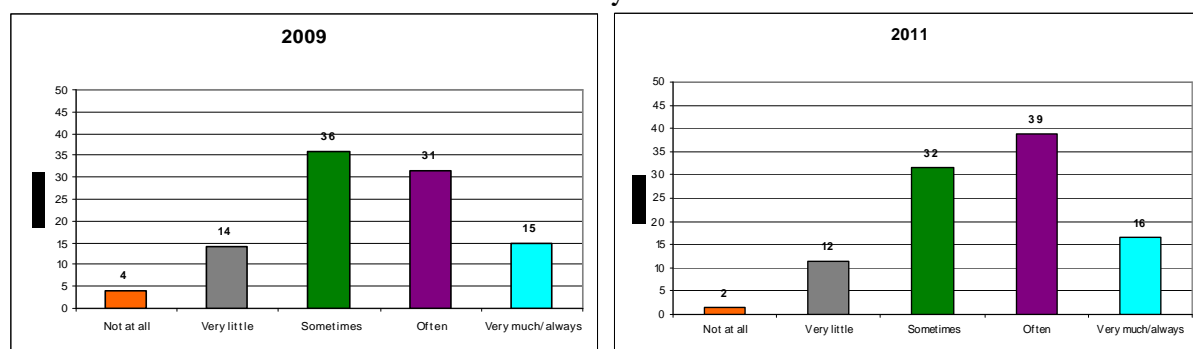
There are more percent of the students that can come up with their own ideas in 2011 than there were in 2009.

6. I like to decide over my working hours and how I want to solve the task I'm given at school.



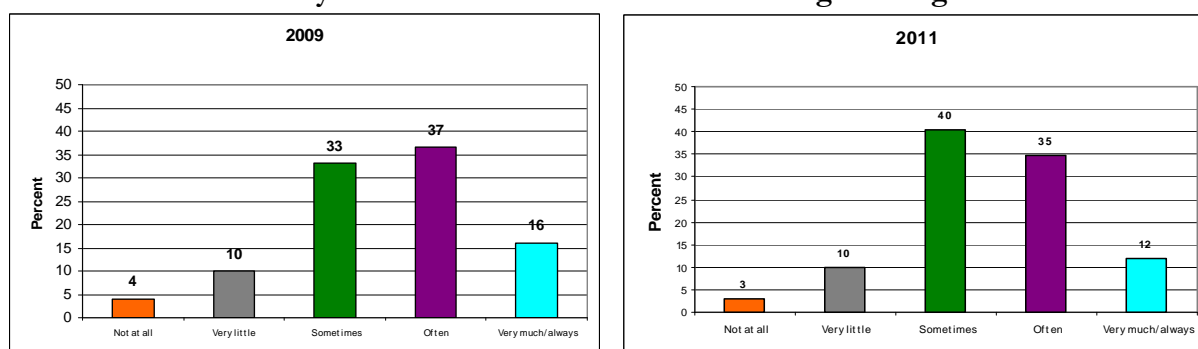
The result shows that the students like to decide over their own working hours. The percent is relatively unaltered.

7. I react on and discuss what the teachers say.



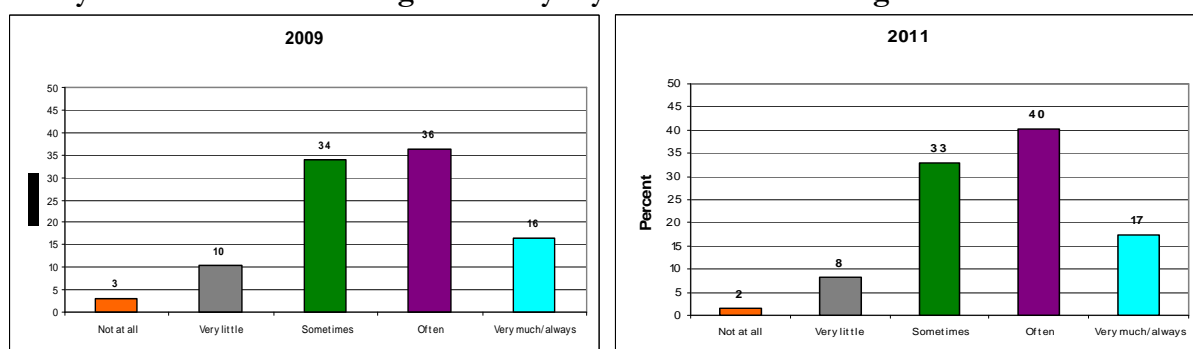
The majority of the students like to discuss what the teachers say both in 2009 and 2011. The percent from 2009 and 2011 are relatively alike. The percent of the students going from not at all/very little has decreased from 2009 to 2011.

8. I feel motivated in my schoolwork and have endurance to go through with it.



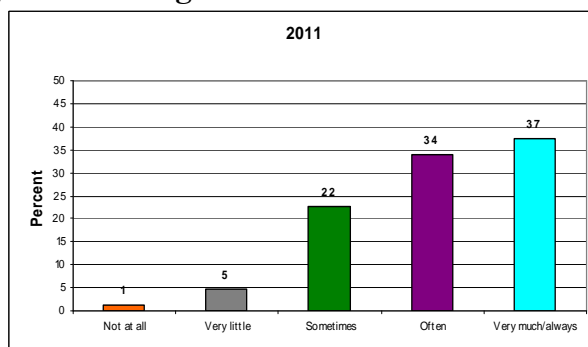
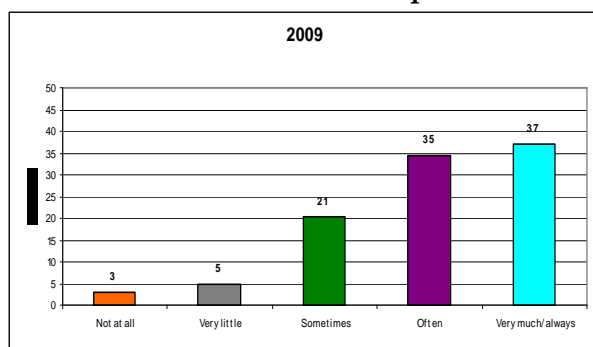
The motivation among the students varies from both 2009 and 2011. A higher percent of the students are sometimes motivated in 2011.

9. I try to find answers to assignments by myself instead of asking the teacher.



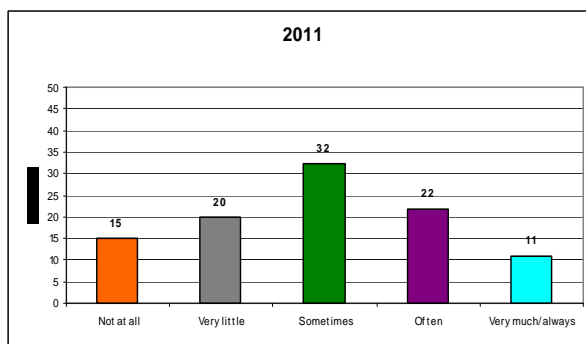
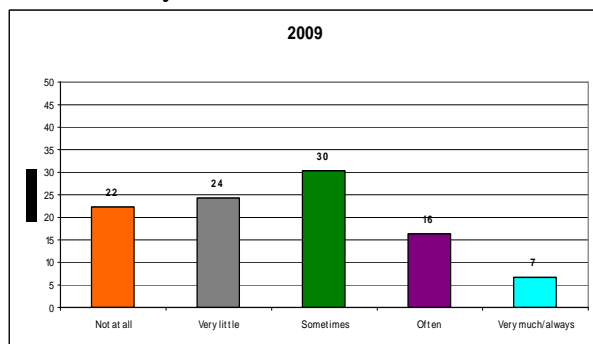
A higher percent of the students tend to find answers by themselves in 2011 than in 2009.

10. I think that I'm the one responsible for my own learning.



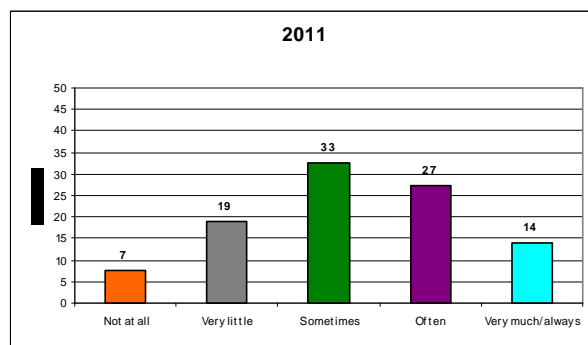
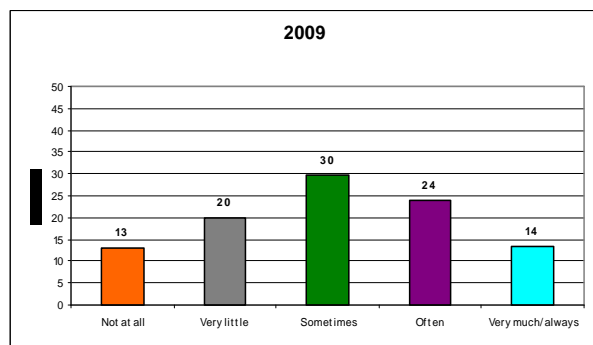
The result shows that a majority of the students think that they are responsible of their own learning.

11. I take active interest in for example the student's council or likewise to be able to influence my school.



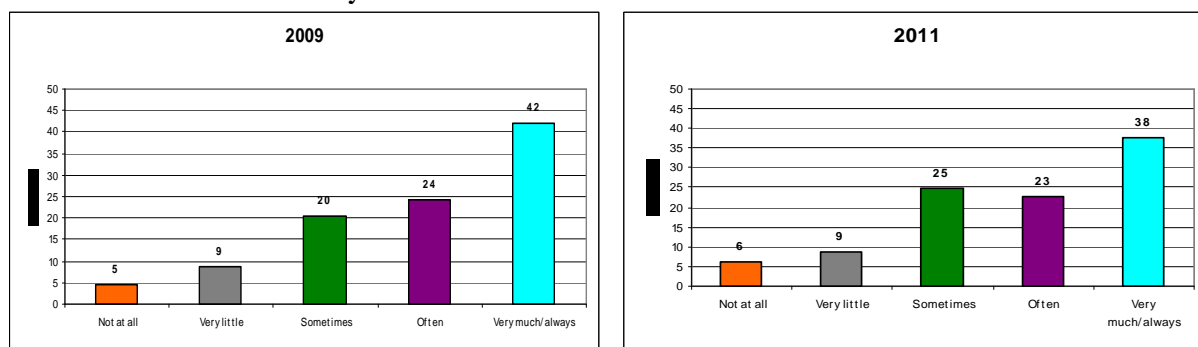
A higher percent of the students are active in for example students council in 2011 than in 2009.

12. The school informs/educates the me on how I can run my own firm or business in the future.



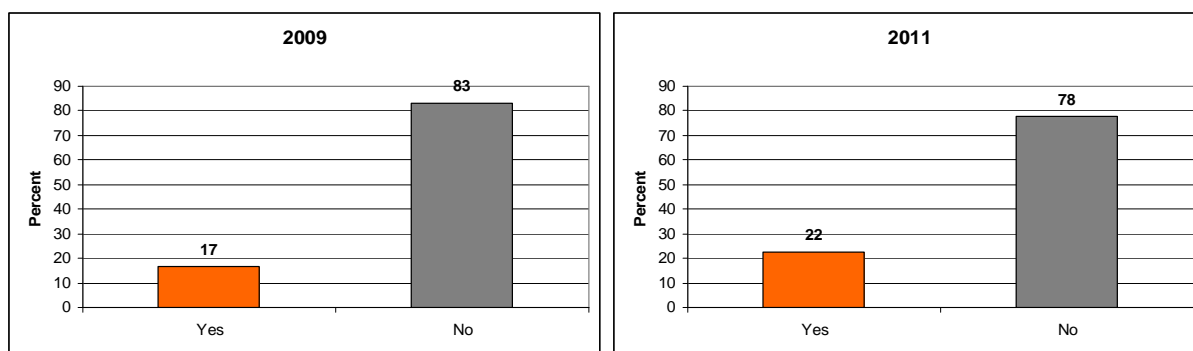
The schools informs/educates more students in how to run their own business.

13. I would like to have my own firm or business in the future.



There are more students who consider having their own business in the future. The ones who are very certain has decreased from 2009 to 2011.

14. I have/I have had my own company in school through the program Junior Achievement.



There are more percent of the students that have or have had their own company in school through Junior Achievement.